



# ELEMENT CONSTRUCTION

PRECISION IN ALL ELEMENTS



# 12 Years Development Path



## 2007

- Company foundation
- Implementation of innovative technologies of installation of industrial floors in Georgia

## 2012

- First steps in Construction business
- Sky Plaza – Mall in Gldani District

## 2015 - 2017

- Extantion of activities: Hydro-Electric Power Stations
- The HPPS in Kintrishi and Avani

## 2008 - 2011

- Implementetion of polished concrete floor technology and development of polymer flooring technology

## 2013 - 2014

- Progress in the field of Industrial Construction

## 2018 - 2019

- New Level in the Large Scale Construction:  
Coca-Cola bottling plant

2007    2008    2009    2010    2011    2012    2013    2014    2015    2016    2017    2018

# Goals and Values



## Goals

Our goal is to become the leading construction company in Georgia, offering tailored solutions based on customer demand and providing high quality of execution in accordance with the agreed time and budget.

## Strategy

The most important for our company is to defend precision in all elements. While conducting all works with modern technologies and in accordance with European standards, the company offers high quality of service, reasonable and optimal solutions in planning, management and execution of construction projects.

## Values

**DECENCY**

**EFFICIENCY**

**DEVELOPMENT**

**LONG-TERM  
PARTNERSHIP**

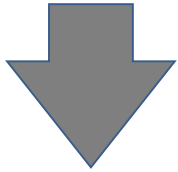
**HIGH SENSE OF  
RESPONSIBILITY**

**PROFESSIONALISM**

**ATTENTION TO  
DETAILS**



# Our Services



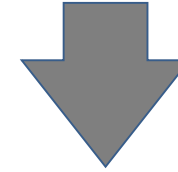
## ***Planning and Design***

- ❖ Topographical Survey
- ❖ Geological Survey
- ❖ Architectural Design
- ❖ Structural design
- ❖ MEP Design
- ❖ Author's supervision



## ***Construction***

- ❖ Industrial
- ❖ Residential
- ❖ Commercial
- ❖ Hydrotechnical



## ***Special Services***

- ❖ Metal building
- ❖ Industrial flooring
- ❖ Hydro Isolation

# Projects:

## Coca-Cola Bottling Plant

**Location** Natakhtari

**Client** “Coca-Cola Bottlers Georgia“LTD

**Type of work** Industrial Construction

**Square** 36 000 m<sup>2</sup>

**Concrete Volume** 5 590 m<sup>3</sup>



# ● McDonald's 2 in Kutaisi

**Location**

**Kutaisi**

**Client**

**“Coca Cola Bottlers Georgia” LTD**

**Types of Work**

**Construction & Fit out Works**

**Square**

**800 m<sup>2</sup>**

**Specification**

**Tight deadlines, executed in 4 months**





## Wine Factory of Chateau Mukhrani and Mukhranbatoni Palace

**Location**

Mukhrani Village, Georgia

**Client**

“Chateau Mukhrani” JSC

**Type of Work**

Re-Construction Works

**Square**

1 620 m<sup>2</sup>

**Specifications**

Drainage systems, Drain systems and hydro isolation of foundations



**Avani HPP**

**Location** Akhalsopeli, Georgia

**Client** "Energo invest" LTD

**Types Of Work** Construction & Fit Out Works

**Concrete Volume** 10 000 m<sup>3</sup>

**Specification** Capacity: 4,6 MWT





## Tbilisi Hills Golf Club

**Location** Teleti, Tbilisi

**Client** "GWP" LTD

**Types Of Work** Construction & Fit Out Works

**Concrete Volume** 2 900 m<sup>3</sup>

**Specification** Quantity of reservoirs : 2; volume of 5000 m<sup>3</sup> each



# ● Dasta Archive Building

**Location** ● Tbilisi

**Client** ● “Dasta records management” LTD

**Types Of Work** ● Construction & Fit Out Works

**Square** ● 540 m<sup>2</sup>

**Specification** ● Ceiling Height 14 m



**● Hotel in Gudauri**

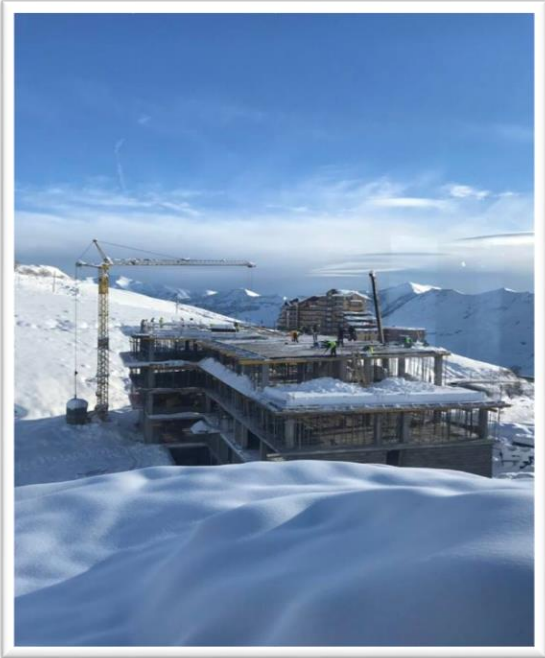
**Location** ● Gudauri, Georgia

**Client** ● "Paski" LTD

**Types Of Work** ● Construction & Fit Out Works

**Concrete Volume** ● 1 700 m<sup>3</sup>

**Specification** ● Severe Meteorological Conditions





**Dadiani Residence**

**Location** Zugdidi, Georgia

**Client** “Marmax Georgia” LTD

**Types Of Work** Construction & Fit Out Works

**Square** 12 000m<sup>2</sup>

**Specification** Energy-Efficient Construction



**● Vehicle Inspection Centers**

**Location** Tbilisi, Tsalka, Akhalkalaki, Ambrolauri, Sachkhere

**Client** "Greenway" LTD

**Types Of Work** Construction-Installation

**Square** 2 700 m<sup>2</sup>

**Specification** 8 projects in 2 months



# Merani Shopping Mall

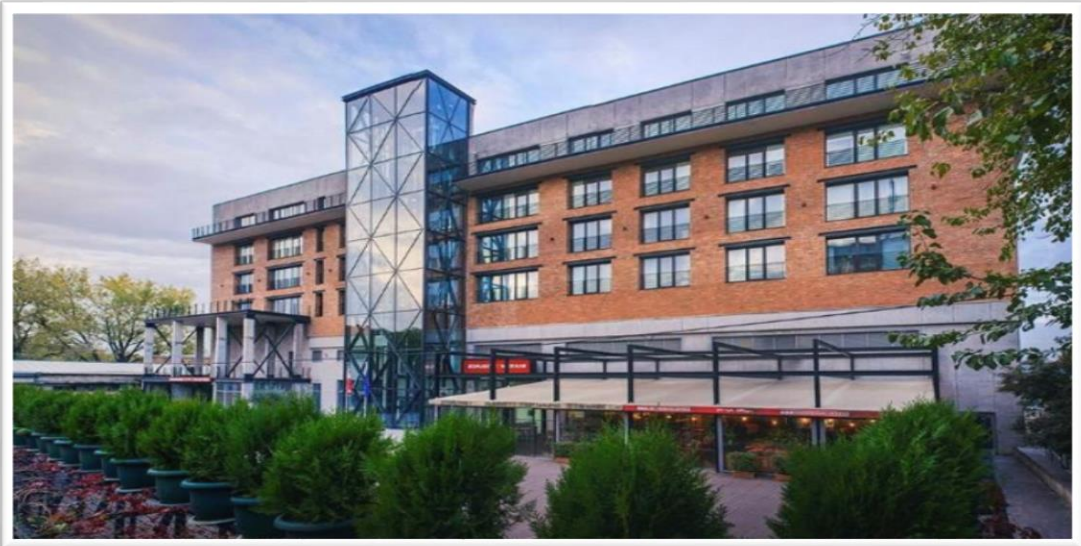
**Location** Tbilisi

**Client** "G&K Development" LTD

**Types Of Work** Construction & Fit out Works

**Square** 10 000 m<sup>2</sup>

**Specification** Tight deadlines, Difficult location





**● Bagebi Plaza**

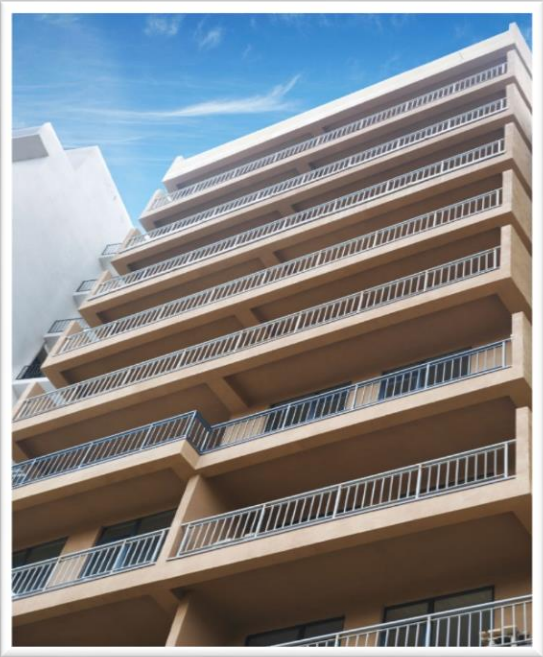
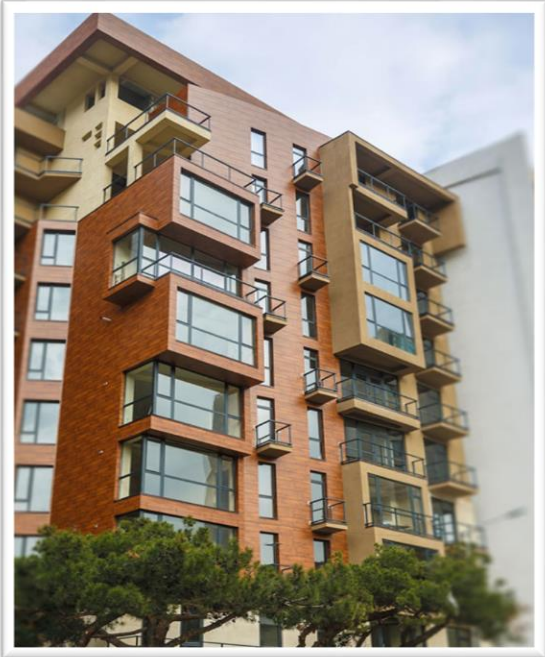
**Location** ● **Tbilisi**

**Client** ● **Partnership Bagebi Plaza**

**Types Of Work** ● **Construction & Fit out Works**

**Square** ● **4 600 m<sup>2</sup>**

**Specification** ● **2017 the Best Architectural Project Award Winner**



# The Biltmore Hotel Tbilisi

**Location** Tbilisi

**Client** "Dhabi Group" LTD

**Type Of Work** Fit Out Works

**Works Performed** Parking, Flooring, Masonry & BOH Fit Out Works

**Specification** Ceiling Height 150m, Square 24 000 m<sup>2</sup>



**Kintrishi HPP**

**Location** Kintrishi, Adjara Region, Georgia

**Client** "Hydro Development Company" LTD

**Types Of Work** Construction & Fit out Works

**Concrete Volume** 6964 m<sup>3</sup>

**Specification** Capacity 7.5 MWT





**Sky Plaza Shopping Mall**

**Location** Tbilisi

**Client** "Sky Holding" LTD

**Types Of Work** Construction & Fit Out Works

**Square** 5 500 m<sup>2</sup>

**Specification** The First Construction Project



**○ Comfort Residence**

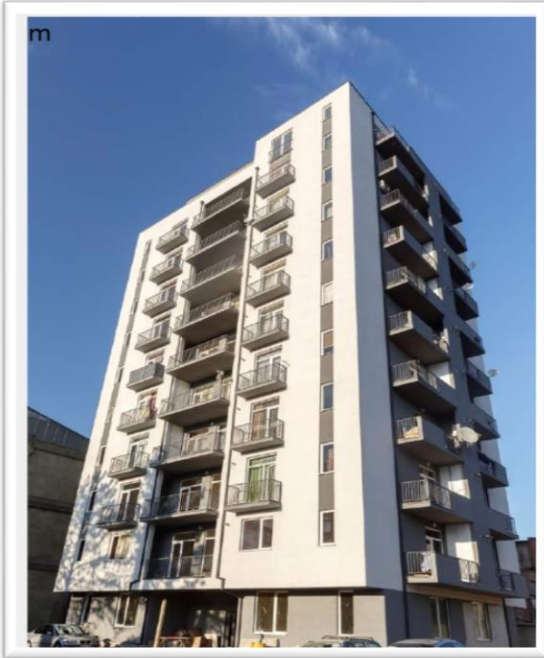
**Location** **Tbilisi**

**Client** **“Moscow Avenue” LTD**

**Types Of Work** **Construction & Fit out Works**

**Square** **4 100 m<sup>2</sup>**

**Works Performed** **Reinforced concrete works**



## ● Multistory Residential Building

Location

Tbilisi

Client

“Binadari” LTD

Types Of Work

Construction & Fit Out Works

Square

11 200 m<sup>2</sup>

Concrete  
Volume

4 195 m<sup>3</sup>





**● Restaurant & Pizzeria**

**Location** Tbilisi (2 Locations)

**Client** “Domino’s Pizza Georgia” LTD

**Type Of Work** Fit Out Works

**Works Performed** Interior Set-Up

**Specification** Tight deadlines



# Our Clients & Partners

## PARTNERS



Projects Examples:



## CLIENTS





# **ELEMENT CONSTRUCTION**

PRECISION IN ALL ELEMENTS

**13 Mgaloblishvili Str., 0160 Tbilisi , Georgia.**

**Phone: +995 32 2 374 737**

**[info@ec.ge](mailto:info@ec.ge)**

**[www.ec.ge](http://www.ec.ge)**